



Ysgol Maes Y Felin 17.03.23

17th March

In this edition;

- **A message from Mr Thomas**
- **What have we been up to?**
- **Welsh Corner - Cornel Cymraeg**
- **Special Mentions**
- **Attendance**
- **Curriculum for Wales**
- **Parent Readers**
- **Internet Safety**
- **Upcoming Events**
- **Future Plans**
- **Financial Support**
- **Posters**
- **Important Notices**
- **Contact Us**

A Message from Mr Thomas, Acting Headteacher

Prynhawn da.... Good afternoon

At last, we have completed a full week and as nice as the snow was last week it has been good getting back into the swing of things.

As things stand the proposed industrial action has been postponed for the remainder of the academic year whilst negotiations continue. If this changes, we will let you know as soon as we can.

It has been a quieter week than normal due to the fact we were supposed to be off for two days, but it gave all classes the chance to put their heads down and concentrate on their class work and catch up on their work they missed from Eco week. The work the children produced was to a very high standard and it was lovely for them to show off their work to the parents who came to the Eco coffee morning on Tuesday. They were so proud to be able to do this.

The week ended on a very high note with a very busy Friday which saw Year 3/4 working on Techno Camp, Year 5/6 having Xplore visit, Owls service and Comic Relief day.

The service allowed the children the opportunity to celebrate how special mothers are in readiness for Mothering Sunday. So, children make sure you remember to spoil your mums this Sunday.

Red Nose Day was its usual day of mayhem and it was lovely to see everybody so happy and raising a fantastic £95 (up to now). A big thank you to the staff and school council for organising it.

Next week is a busy one starting with Parent's Evening on Monday (20th March), can I please ask those who haven't completed the form yet to do so as there aren't many spaces left. We are continuing to offer both face to face and online meetings which allows parents the choice to decide which version is the most convenient to yourselves as we understand everybody's circumstances are different.

Monday also sees Year 3/4 pupils taking part in a Star Dome workshop to support their work on Space and Llwyfen and Masarnen pupils visiting the library.

Thursday sees us inviting in the Welsh Language Theatre Company who will be putting on a performance for Years 3/4 and 5/6 pupils helping us to celebrate our Welsh culture and heritage as well as promoting our Welsh language.

The week ends with Bedwen parents coming in to spend time with their children. Please make sure you have completed the form to attend please do as soon as you can to ensure we prepare the right amount of food. I appreciate you may have done it previously, but I understand that circumstances may have changed.

Hope you all have a wonderful weekend.

Kind regards,

Mr. David Thomas, Acting Headteacher



What have we been up to?

Mr Thomas enjoyed taking part in an exciting Rubik's cube lesson this this week with Mr Downes. The children have enjoyed it so much, so we are going to add it to our wide range of After School Clubs. The club will run for children in year 5/6 on a Tuesday from 21st March, if your child wishes to attend then please book your child in via SchoolCloud.





Thank you to all who attended the Fairtrade coffee morning on Tuesday. The Eco committee loved making the cakes to sell and making the signage and posters to promote our event. Every class had some representatives showing the work that they had completed in their classes for Global week. The children were brilliant at talking about their chosen countries, showing power points, singing in Spanish and showing Artwork.

One parent said " I am so impressed with the work that I have seen today and the enthusiasm of the children. It is so lovely to see the work and have the children explain their processes. I have learned something new today!"

I would like to thank all of the parents who attended and all of the children involved.







The first of the great outdoors club was a huge success, children enjoyed worm charming, fishing in the puddles and exploring the area. We warmed up with a hot chocolate as we were all soaked! Hoping for better weather next week so that we can have some marshmallows over the fire!







Welsh Corner - Cornel Cymraeg



Gair yr Wythnos

20 Mawrth 2023



Wyt ti'n iawn?

(Are you ok?)

Yndw

Nac ydw




Mae siarad
Cymraeg yn
bril, mae
siarad
Cymraeg yn

Special Mentions

Summer, Owls was the winner of the '100% Weekly Attendance' Award for the week beginning 6th March.

Darcy-Nell, Llwyfen was the winner of the '100% Weekly Attendance' Award for the week beginning 13th March.

Da iawn both!

Da lawn to Masarnen who won this week's class award!





Please find below some of our KS2 pupils with their Four Purpose certificates.



Attendance

First of all a huge thank you for taking the time to complete the form about attendance initiatives. As you know, good attendance is really important to ensure success at school and future careers, alongside this it ensures your children develop friendships, social skills and a positive attitude to learning. We are really keen to improve attendance throughout school to ensure every child meets

their potential and exceeds expectations. We have collated the views of children, staff, governor and families and have come up with several new initiatives to excite children and encourage good attendance, these are outlined below.

- Each week there will be a raffle and one child will be awarded a £10 amazon gift card.

Children will be entered into the raffle if they have 100% attendance that week – individual circumstances will be taken into account

- Each half term, there will be a raffle and one child will be awarded a £25 amazon gift card.

Children will be entered into the raffle if they have 100% attendance that week – individual circumstances will be taken into account

- Each week, there will be a raffle and 10 children will be invited to tea with Mr T

Children will be entered into the raffle if they have 100% attendance that week – individual circumstances will be taken into account

- Each week there will be a trophy awarded to the class with the best attendance







individual circumstances will be taken into account

- Each half term the class with the best attendance will be rewarded with a trip.


- Each term, children with 100% attendance will receive a certificate.

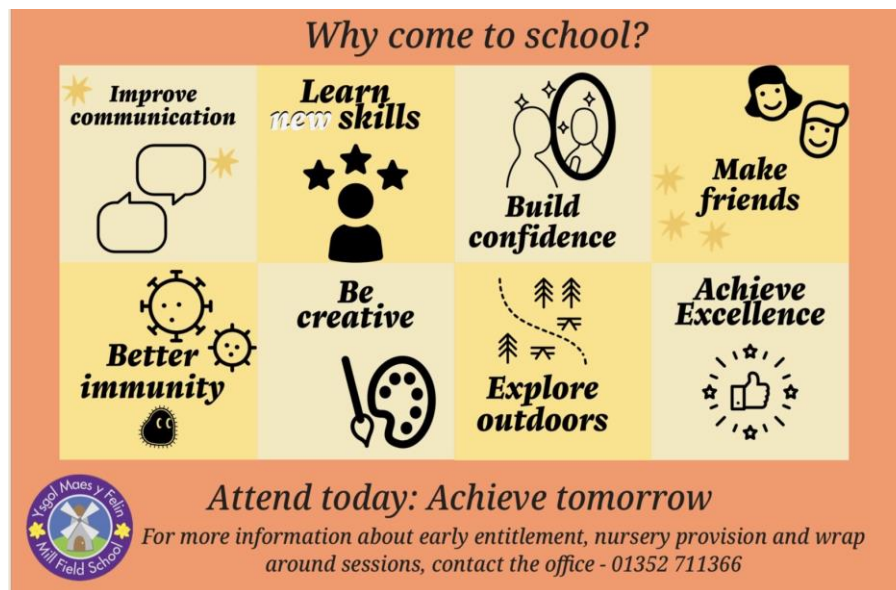
These initiatives will be regularly reviewed, if you have any other ideas, please let us know via the school office.

Why attendance matters.

 <p>HIGH ATTENDANCE AT SCHOOL GETS YOUR CHILD'S LIFE OFF TO A FLYING START!</p>	 <p>INCREASING ATTENDANCE BY JUST 5% CAN DOUBLE THE CHANCES OF GAINING GOOD QUALIFICATIONS</p>	 <p>MISSING TWO DAYS A MONTH MEANS A CHILD MISSES 10% OF THE SCHOOL YEAR</p>	<p>GOOD ATTENDANCE IN PRIMARY SCHOOL</p> <p>Improves reading</p> <p>Writing • MATHS SKILLS</p>
 <p>THERE ARE 175 DAYS A YEAR NOT SPENT IN SCHOOL PLENTY OF TIME FOR SHOPPING, HOLIDAYS AND APPOINTMENTS!</p>	 <p>100s OF SUBJECTS 1000s OF CLASSES ENDLESS POSSIBILITIES</p>	 <p>TURNING UP JUST 5 MINUTES LATE EVERY DAY ADDS UP TO OVER 3 DAYS LOST IN THE YEAR!</p>	<p>MORE SCHOOL =</p> <p>HIGHER GRADES INCREASED CONFIDENCE MORE FRIENDS BRIGHTER FUTURE</p>

Attend today: Achieve tomorrow
For support with attendance, please contact the office - 01352 711366





Curriculum for Wales

Please find below some informative links in regard to the Curriculum for Wales:

[Education in Wales is Changing \(English/Saesneg\) - Youtube](#)

[A guide to the new Curriculum for Wales](#)

The Curriculum for Wales is the national curriculum that sets out what children and young people should be taught in schools in Wales. It was introduced in September 2021 and replaces the previous curriculum that was in place.

The Curriculum for Wales is designed to be broad and balanced, providing learners with the knowledge, skills, and experiences they need to thrive in a rapidly changing world. It is based on six Areas of Learning and Experience (AoLEs):

1. Expressive Arts
2. Health and Well-being
3. Humanities
4. Languages, Literacy and Communication
5. Mathematics and Numeracy
6. Science and Technology

The curriculum also includes a set of four Purposes, which outline the aims and values of education in Wales. These Purposes are:

1. To develop confident individuals who are able to think critically and creatively, and who have a strong sense of Welsh and global citizenship.

2. To develop successful learners who are able to work independently and in collaboration with others, and who have a love of learning that will stay with them throughout their lives.
3. To develop responsible citizens who are able to make informed decisions and contribute to the well-being of their communities, both locally and globally.
4. To develop effective contributors who are able to use their skills and knowledge in the workplace, and who have the ability to adapt to change and new challenges.

The Curriculum for Wales emphasizes experiential learning, critical thinking, and digital literacy, and encourages learners to apply their learning in real-world contexts.

Parent Readers

We welcome parents and grandparents into our school to help as a one off or more regularly. If this is something you would like more information on, please speak to individual class teachers or the office. Please note that an enhanced DBS will be required for all volunteers but this will be organised by school.

Internet Safety

Following recent reports of unsafe behaviour online, we will be sharing internet safety advice and new information about specific apps each week.

This week the focus is on the Online Bullying. Please click the link below to view more information.

[Online Bullying](#)

Upcoming Events

- Explore Together Sessions for Year 5 & 6 10th, 17th, and 24th March at 1:30 until 3:00
- Non Uniform Day - Easter Egg Donations for the Family Bingo - 24th March
- Uniform Exchange Day (More information to follow) - 24th March
- Bedwen Class Parent Lesson and Lunch - 24th March at 10:00 until 12:00
- Easter Family Prize Bingo - 30th March - 3:30p.m until 5:30p.m
- Year 5/6 Ice Skating at Deeside - 21st, 24th and 28th April and 5th May
- Badgers Class Service, Parent Lesson and Lunch - 21st April at 10:00 until 12:00
- Foxes Class Service, Parent Lesson and Lunch - 11th May at 10:00 until 12:00
- Squirrels Class Service, Parent Lesson and Lunch - 26th May at 10:00 until 12:00



Future Plans

Community Engagement

Isa Lamb, a lady who is very keen to develop community engagement has been working hard to get funding for a project based in Holywell. This will be a project linking Holywell Hospital and Ysgol Maes y Felin with a view to developing the outdoor space as community gardens. As part of the bid for funding, Isa has been asked to get the views of the local community. We would really appreciate it if you could fill out the form below in order to help her raise funds for this project.

Diolch

[Community Gardens Project](#)

Fundraisers

We would really appreciate your help with different fundraising ideas. In order to do this, please could we ask you to fill out the form below. We are looking to fundraise some money for some new and more relevant books for the library.

[Fundraising Ideas](#)

Sponsorships

WE NEED YOUR HELP!

Our sports department is thriving under the leadership of Mrs Saunders and we are involved in an increasing amount of tournaments and competitions. In order to represent Ysgol Maes y Felin effectively, we are asking for a local business to sponsor our football, netball and athletics teams. If you can help please contact the office.

HomeStart Flintshire

HomeStart are looking to offer more groups and support to the community but need help from the community as to what they think would be beneficial to them and other ways we can extend their services. They are conducting some market research around the area and would kindly ask if you could fill in the form below with your opinions. There are no intrusive questions or anything that goes against data protection, and all require a very general response.

[HomeStart Questionnaire](#)

Financial Support

Childcare Offer

Do you or someone you know need help with childcare costs? Under the Childcare Offer for Wales, you could claim up to 30 hours of early education and childcare a week, for up to 48 weeks of the year. This government-funded childcare scheme aims to lessen the burden of childcare costs so that you can spend the money you've saved on the things that matter most to your family.

The Offer has already helped parents from all over Wales to return to work, increase their hours or work more flexibly. If you're looking for a job, or thinking about going back into education or training, but are worried about childcare costs, this support could make all the difference.

Whatever the Offer means for you and your family, don't miss out on your share of this childcare funding.



All parents wishing to receive Childcare Offer for Wales funded childcare from January 2023 will need to apply through the [new national digital service](#). The online service is bilingual and can be accessed via a laptop, mobile phone or tablet.

When applying, you will need:

- Your child's birth certificate
- Proof of address
- Proof of household income or enrolment on a higher or further education course

Free School Meals (eFSM)

Some families who meet certain criteria, for example those on lower incomes or in receipt of certain benefits, are entitled to receive a free school meal (eFSM).

On a successful application for eFSM families are then eligible for other benefits to cover the cost of school essentials such as school uniform grants (PDG).

Even though the roll out of UPFSM will begin in September 2022, and eligible year groups will begin to receive free school meals, families who are eligible for eFSM should continue to use the eFSM application process to ensure they don't lose out on other benefits.

For more information on eFSM and uniform grants go to:

<https://www.flintshire.gov.uk/en/Resident/Council-Tax-and-Benefits-and-Grants/Free-School-Meals-and-Uniform-Grants.aspx>

Peidiwch â cholli allan

Cymorth gyda chostau ysgol.

Don't miss out

Help with school costs.

- Gwiriwch a ydych yn gymwys i gael Prydau Ysgol Am Ddim a hawliwch yr hyn rydych yn gymwys iddo trwy Hanfodion Ysgol (PDG - Mynediad)
- Check your eligibility for Free School Meals and claim what's yours through School Essentials (PDG Access)
- Dysgwch mwy am gyflwyno Prydau Ysgol am Ddim i bob plentyn ysgol gynradd erbyn 2024
- Find out about the rollout of Free School Meals to all primary school children by 2024

Darllenwch fwy a gwiriwch a ydych chi'n gymwys: [llyw.cymru/hawliwch-help-gyda-chostau-ysgol](https://www.gov.wales/get-help-school-costs)
Neu siaradwch â staff yr ysgol neu cysylltwch â'ch Awdurdod Lleol am ragor a wybodaeth.

Read more and check if you're eligible: [gov.wales/get-help-school-costs](https://www.gov.wales/get-help-school-costs) Or talk to school staff or contact your Local Authority for more information.

Help with the cost of the school day. Did you know? The latest Microsoft Office tools including Word, Excel and PowerPoint are available for FREE to learners and teachers in Wales:

[Microsoft - Hwb](#)

If you are aged 8-18 years and attend a school in Flintshire, please visit <https://heygirls.co.uk/flintshirehomepacks/...> to apply for free period products.



Posters



Come and join our School Family



What do we offer?

- * 30 hours free childcare
- * Breakfast Club from 7 45am
- * After school Club until 5 30pm
- * Extensive grounds and excellent outdoor facilities
- * A full programme of after school clubs
- * A focussed Nurture Provision
- * An on site family liaison officer
- * Opportunities for families to come in to school and work alongside their children.
- * Offsite trips and experiences including residential visits.
- * Expert staff who work with children to plan engaging and authentic learning experiences

We have spaces available in most year groups for an immediate start.

I really like the communication from school, it's great seeing what my child has been up to on a daily basis. - Parent

I love coming to school, we do lots of fun things - Pupil in year 4

The school nurtures a calm learning environment where the relationship between staff and pupils supports learning effectively. - Estyn 2019

For admission enquires and to arrange a visit to the school, please contact the main office - 01352 711366, mfmil@hwbcymru.net



VOLUNTEERS NEEDED

We are looking for volunteers to join our Events Working Group and to support with the running of events in the Holywell and Greenfield Communities.



We also welcome any students currently working towards their Duke of Edinburgh Awards. If you have a few hours to spare or know of anyone who could help us, please contact: support.officer@holywell.wales

Thank you!

10-12.30 | 4th April-Holy Trinity | 5th April-St Peter's

THE HUB CLUB!

FOOD-GAMES-STORY-CRAFT

A church holiday club for 5-12 year olds

LIMITED spaces - **FREE** event but
booking is **ESSENTIAL** - book with
jonathanandrews@cinw.org.uk

GRAVE TO GARDEN



Image by Freepik

YMA I HELPU GYDA CHOSTAU BYW

Hawliwch eich arian yma:

llyw.cymru/ymaihelpu

neu ffoniwch am ddim ar

0808 250 5700

HERE TO HELP WITH THE COST OF LIVING

Claim what's yours here:

gov.wales/heretohelp

or call free on

0808 250 5700



FREE



EMPOWERING
PARENTS
EMPOWERING
COMMUNITIES

Being a Parent Group

Do you have at least one child between the ages of 2-7 years and live in Flintshire?

Would you like ideas on how to support your children?

Would you like help understanding your child's behaviour?



We may have the group for you....

Join our free groups run by fully trained local parents

An opportunity to meet other parents going through similar experiences

Practical support for the day to day challenges of being a parent

Share ideas with other parents

Some of the topics we cover over 8 sessions

- Play
- Feelings
- Being a parent
- Understanding children's behaviour

HOLYWELL FLYING
START CENTRE
STARTING ON 26TH
JANUARY
12:30 TILL 2:30PM
8 WEEKS
CRECHE AVAILABLE

CONTACT EMMA FOR MORE INFORMATION
07584 533111
FLINTSHIRE.EPEC@FLINTSHIRE.GOV.UK

Springtime fun day!

Join us for springtime fun and help us beat cancer!
At the Clocktower, Mostyn, CH8 9DZ.

Admission free!

Join us on the 25th of March at 12:00 pm
till 15:30 pm.

- Craft fair with lots of amazing stalls.
- Cosplay characters to meet.
- Beautiful mermaid face painter.
- Mermaid show.
- Raffle with amazing prizes.
- Name the Easter Bunny to win a special prize.
- And more fun things to take part in.

Help us raise funds for Cancer Research U.K.

Come along for lots of fun!



You could
save up to £230
on your annual
water bill.

Support for families

With half term approaching, we know some families may be worried how they will afford daily essentials, as well as providing meals for their children who are off school.

Did you know?

Families who receive the pupil development grant and are in receipt of a means tested or disability benefit may also be entitled to help towards their water bills.



We're here
to help

Call us to talk through
your options:

0800 052 0145

Visit us online for
more information:

dwrcymru.com/supportwithbills







CYLCH TI A FI TREFFYNNON



Don't worry if you don't speak Welsh as **EVERYONE** is
welcome at the Cylch Ti a Fi!



 Pryd/When?	Pwy/Who?	Ble/Where?
<p>Dydd Mawrth / Tuesday</p> <p>9:45-11:00yb/am</p> <p>Sesiwn Clwb Cwtsh</p> <p>session 9:45-10:45</p> <p>28/02/23</p> <p>07/03/23</p> <p>14/03/23</p> <p>21/03/23</p> <p>28/03/23</p>	<p>I deuluoedd â phlant rhwng 0-4 oed For families with children aged 0-4 years</p> 	<p>Ysgol Gwenffrwd, Stryd Chwitfordd, Holywell CH8 7NJ</p>
<div style="display: flex; align-items: center;">  <div> <p>I archebu lle cysylltwch â Elaine / To book a place please contact Elaine</p> <p> elaine.griffiths@meithrin.cymru</p> </div> </div>		

- Byddwn yn cadw at ganiellau byw gyda Colid Llywodraeth Cymru / We will be adhering to the latest living with Covid guidance from the Welsh Government
- Rhaid archebu lle (nifer cyfyngedig) / Booking is essential (limited spaces)
- Diod eich hun - Snac ffeul teulu (dim rhannu) / Please bring your own snacks and drinks - (no sharing)

www.meithrin.cymru



Physical activity for children and young people (5–18 Years)



BUILDS
CONFIDENCE &
SOCIAL SKILLS



DEVELOPS
CO-ORDINATION



IMPROVES
CONCENTRATION
& LEARNING



STRENGTHENS
MUSCLES
& BONES



IMPROVES
HEALTH
& FITNESS



MAINTAINS
HEALTHY
WEIGHT



IMPROVES
SLEEP



MAKES
YOU FEEL
GOOD

Be physically active



Find ways to help all children and young people accumulate an average of at least 60 minutes physical activity per day across the week

UK Chief Medical Officers' Physical Activity Guidelines, 2019



WHAT'S ON IN HOLYWELL & GREENFIELD?

MARCH 2023

When?	What's On?	Where?
02.03.23 10am – 1.30pm	Weekly Gardening Group	Greenfield Valley Community Garden (behind the Bakehouse Café/next to Basingwerk Abbey)
02.03.23	Weekly Market	Holywell Town Centre
09.03.23 10am – 1.30pm	Weekly Gardening Group	Greenfield Valley Community Garden (behind the Bakehouse Café/next to Basingwerk Abbey)
09.03.23	Weekly Market	Holywell Town Centre
16.03.23 10am – 1.30pm	Weekly Gardening Group	Greenfield Valley Community Garden (behind the Bakehouse Café/next to Basingwerk Abbey)
16.03.23	Weekly Market	Holywell Town Centre
23.03.23 10am – 1.30pm	Weekly Gardening Group	Greenfield Valley Community Garden (behind the Bakehouse Café/next to Basingwerk Abbey)
23.03.23	Weekly Market	Holywell Town Centre
30.03.23 10am – 1.30pm	Weekly Gardening Group	Greenfield Valley Community Garden (behind the Bakehouse Café/next to Basingwerk Abbey)
30.03.23	Weekly Market	Holywell Town Centre

APRIL 2023

When?	What's On?	Where?
01.04.23 11am – 3pm	Bike Bonanza!	Greenfield Valley
06.04.23 10am – 1.30pm	Weekly Gardening Group	Greenfield Valley Community Garden (behind the Bakehouse Café/next to Basingwerk Abbey)
06.04.23	Weekly Market	Holywell Town Centre
07.04.23 All Day	Easter Egg Trail	Greenfield Valley
08.04.23	Car Boot Sale	Tower Gardens, Holywell
08.04.23 All Day	Easter Egg Trail	Greenfield Valley
09.04.23 All Day	Easter Egg Trail	Greenfield Valley
10.04.23 All Day	Easter Egg Trail	Greenfield Valley
12.04.23 10am	Bowl Carving for the Younger Generation	Greenfield Valley
13.04.23 10am	Bowl Carving for Adults	Greenfield Valley
13.04.23 10am – 1.30pm	Weekly Gardening Group	Greenfield Valley Community Garden (behind the Bakehouse Café/next to Basingwerk Abbey)
13.04.23	Weekly Market	Holywell Town Centre
20.04.23 10am – 1.30pm	Weekly Gardening Group	Greenfield Valley Community Garden (behind the Bakehouse Café/next to Basingwerk Abbey)
20.04.23	Weekly Market	Holywell Town Centre
27.04.23 10am – 1.30pm	Weekly Gardening Group	Greenfield Valley Community Garden (behind the Bakehouse Café/next to Basingwerk Abbey)
27.04.23	Weekly Market	Holywell Town Centre
29.04.23	Cadi Ha (Dawnsywyr Delyn)	Holywell Town Centre
30.04.23 12pm – 3pm	Railway and Steam Open Day	Greenfield Valley

Important Notices

Library Books

We have had a sort out in our school library, and as a result, we have surplus of some books. If your children would like one to take home, could they please bring in 20p next week and this will be organised with the school librarians.

Class PE Lessons

On the day where your child has a PE lesson, we would like them to come into school wearing their PE Kit. The kit should consist of black joggers or leggings, plain white t-shirt (school t-shirt is fine), school jumper and trainers.

Please find below list of which days each class have PE. Please note, there have been some changes which will be implemented after half term, please find these changes below.

- *Monday:*
 - Celyn, Collen, Derwen, Foxes, Squirrels
- *Tuesday:*
 - Badgers, Ceiriosen, Celyn, Llwyfen
- *Wednesday:*
 - Ceiriosen, Collen, Derwen, Owls, Squirrels
- *Thursday:*
 - Bedwen, Foxes, Llwyfen, Masarnen, Owls
- *Friday:*
 - Badgers, Bedwen, Masarnen

Parking

Thank you for you co-operation with this. The area outside the green gate is much less congested and safer for all. Diolch

Nuts

We are a nut free school, please ensure there are no nut based foods brought on to the premises.

Collection

Please let us know if someone different is collecting your children, if you would like a password system set up, please speak to class teachers or the office.

- Flintshire Schools Admissions - <https://www.flintshire.gov.uk/en/Resident/Schools/School-Admissions.aspx>
- For any enquiries in regard to School Transport, Streetscene & Transportation;
 - **Tel: 01352 701234**
 - **Email: school.transport@flintshire.gov.uk**



IMPORTANT PARENT/CARER/PUPIL INFORMATION



EMERGENCY SCHOOL CLOSURE NOTIFICATION PROCEDURE

Parents/carers and pupils who are able to access the internet from home.

Flintshire County Council reviewed the procedure for notifying parents/carers and pupils when schools need to close at short notice due to adverse weather conditions or other emergencies. This procedure enables head teachers or nominated back up staff to enter emergency/unplanned school closure details directly onto the Flintshire Website at their earliest convenience via internet access. This ensures speed and accuracy of information, by having all emergency school closure notices in the one place. Parents etc. can then check the one source for all schools closed, especially where siblings are attending different schools. **(Please note schools may still use their own method also for supplying closure information i.e. School Website, Schools Call Voice mail service etc.)**

In order to find the Flintshire County Council webpage in times of severe weather emergencies etc. that could affect schools opening, please visit the website Home page www.flintshire.gov.uk. A link will direct you straight to the webpage with the full information details entered by the head teacher or the nominated back up staff.

www.flintshire.gov.uk/schoolclosures

NB This will also automatically update the Council's Twitter to help provide another channel for notification of school closures.

www.twitter.com/flintshirecc

Please Note: At 5.00PM each day the information on the school closure website page will be deleted automatically. Head teachers from 5.30PM onwards, can then enter the next day's information regarding closure, if known in advance. Otherwise any new closure information will be entered early the following morning.

Parents/carers and pupils who are unable to access the internet at home.

- a) Local radio stations are advised to check the Flintshire web site for the latest information and they can then broadcast it accordingly. So those without internet access should listen to Radio Wales or Heart FM to find out the latest information.
- b) Or alternatively refer to schools own procedures for notifying parents without internet access.

Email notification to parents/carers/pupils

Flintshire County Council has set up additional assistance to parents/carers/pupils who may wish to be notified by email of any school closures as soon as they are logged by the school on the Flintshire County Council website. To receive school closure email notification you will need to register your details and which schools you wish to be notified of on:-

www.flintshire.gov.uk/schoolclosuresregistration

At the end of each school year an email containing a link will be sent to all parents/carers etc who have registered to ask if wish to remain registered to receive emails for the following school year for the same schools. All parents/carers who do not respond via the link (by the confirmed date) will have their details automatically removed.

School Transport – Bad Weather

If your child/children are entitled to Free School Transport please refer to the School Transport webpage for information regarding bad weather conditions. Please visit www.flintshire.gov.uk/schooltransport or phone Flintshire's School Transport Team on 01352 702511/704543.

Please note

Due to both Ysgol Maes y Felin and Ysgol Treffynnon being on the same site, if for any reason either school is closed, both schools will close.

Target School Attendance per week: 93%

Please can I remind parents / carers how important it is, that if your child is not going to be in school, please can you contact the office on 01352 711366 as soon as possible, otherwise this will be marked as an unauthorised absence.



September 2022							October 2022							November 2022								
M	T	W	T	F	S	S	M	T	W	T	F	S	S	M	T	W	T	F	S	S		
				1	2	3						1	2			1	2	3	4	5	6	
5	6	7	8	9	10	11	3	4	5	6	7	8	9	7	8	9	10	11	12	1		
12	13	14	15	16	17	18	10	11	12	13	14	15	16	14	15	16	17	18	19	20		
19	20	21	22	23	24	25	17	18	19	20	21	22	23	21	22	23	24	25	26	27		
26	27	28	29	30			24	25	26	27	28	29	30	28	29	30						
					31																	
December 2022							January 2023							February 2023								
M	T	W	T	F	S	S	M	T	W	T	F	S	S	M	T	W	T	F	S	S		
				1	2	3						1	2			1	2	3	4	5	6	
5	6	7	8	9	10	11	2	3	4	5	6	7	8	6	7	8	9	10	11	12		
12	13	14	15	16	17	18	9	10	11	12	14	15	16	13	14	15	16	17	18	19		
19	20	21	22	23	24	25	16	17	18	19	20	21	22	20	21	22	23	24	25	26		
26	27	28	29	30	31		23	24	25	26	27	28	29	27	28							
							30	31														
March 2023							April 2023							May 2023								
M	T	W	T	F	S	S	M	T	W	T	F	S	S	M	T	W	T	F	S	S		
				1	2	3						1	2			1	2	3	4	5	6	7
6	7	8	9	10	11	12	3	4	5	6	7	8	9	8	9	10	11	12	13	14		
13	14	15	16	17	18	19	10	11	12	13	14	15	16	15	16	17	18	19	20	21		
20	21	22	23	24	25	26	17	18	19	20	21	22	23	22	23	24	25	26	27	28		
27	28	29	30	31			24	25	26	27	28	29	30	29	30	31						
June 2023							July 2023							August 2023								
M	T	W	T	F	S	S	M	T	W	T	F	S	S	M	T	W	T	F	S	S		
				1	2	3						1	2			1	2	3	4	5	6	
5	6	7	8	9	10	11	3	4	5	6	7	8	9	7	8	9	10	11	12	13		
12	13	14	15	16	17	18	10	11	12	13	14	15	16	14	15	16	17	18	19	20		
19	20	21	22	23	24	25	17	18	19	20	21	22	23	21	22	23	24	25	26	27		
26	27	28	29	30			24	25	26	27	28	29	30	28	29	30	31					
							30															

Staff Training Day

Holidays (closed to pupils)

Bank Holidays (school closed)

The image is a Google Map showing a residential area. The map is centered on a street with several houses and trees. The map is displayed in a standard Google Maps interface with a white background and a blue border. The map is titled "15m2!1sen!2suk" and includes a search bar at the top. The map is also labeled with "15m2!1sen!2suk" and "15m2!1sen!2suk". The map is displayed in a standard Google Maps interface with a white background and a blue border. The map is titled "15m2!1sen!2suk" and includes a search bar at the top. The map is also labeled with "15m2!1sen!2suk" and "15m2!1sen!2suk".

Ysgol Maes y Felin Website